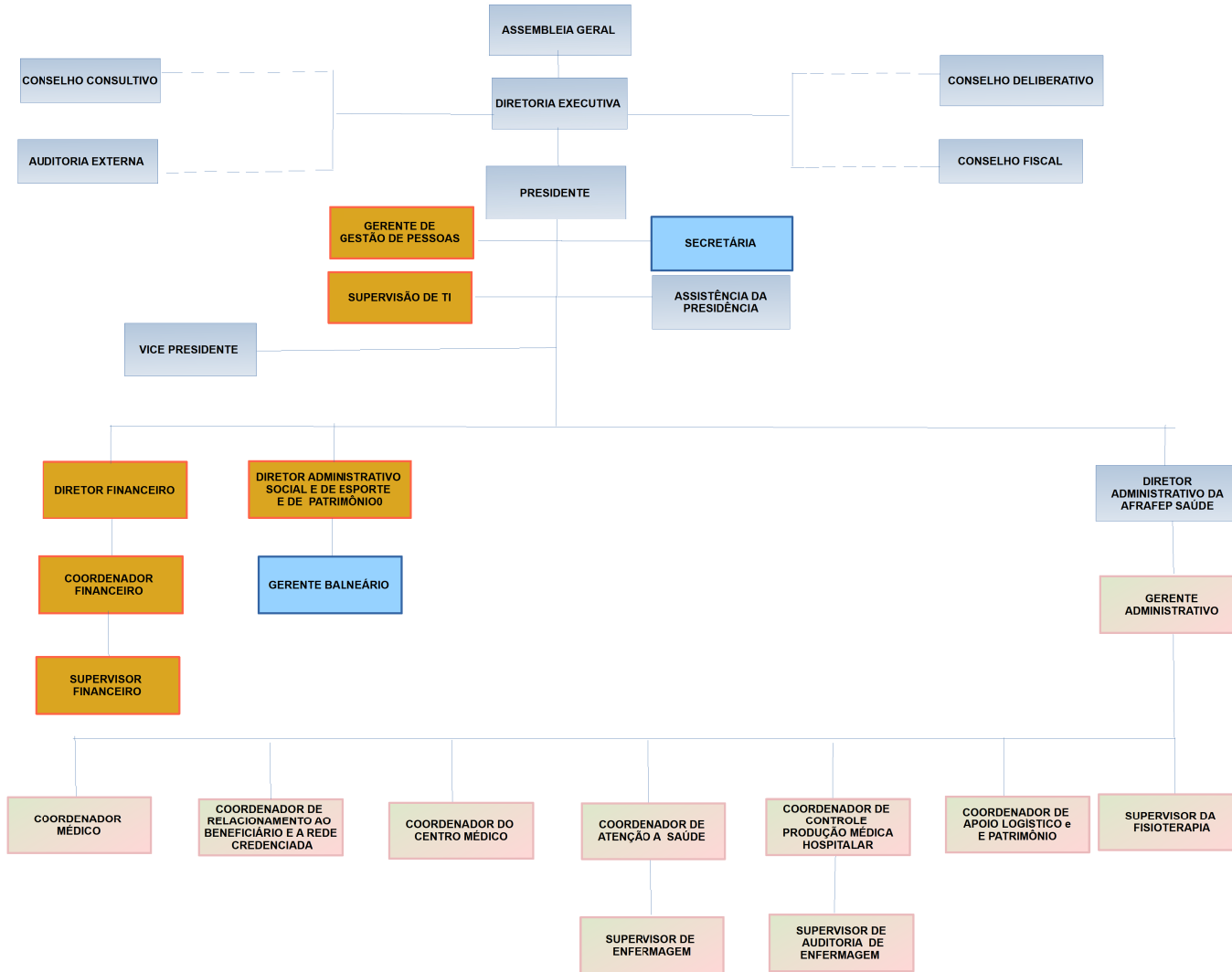


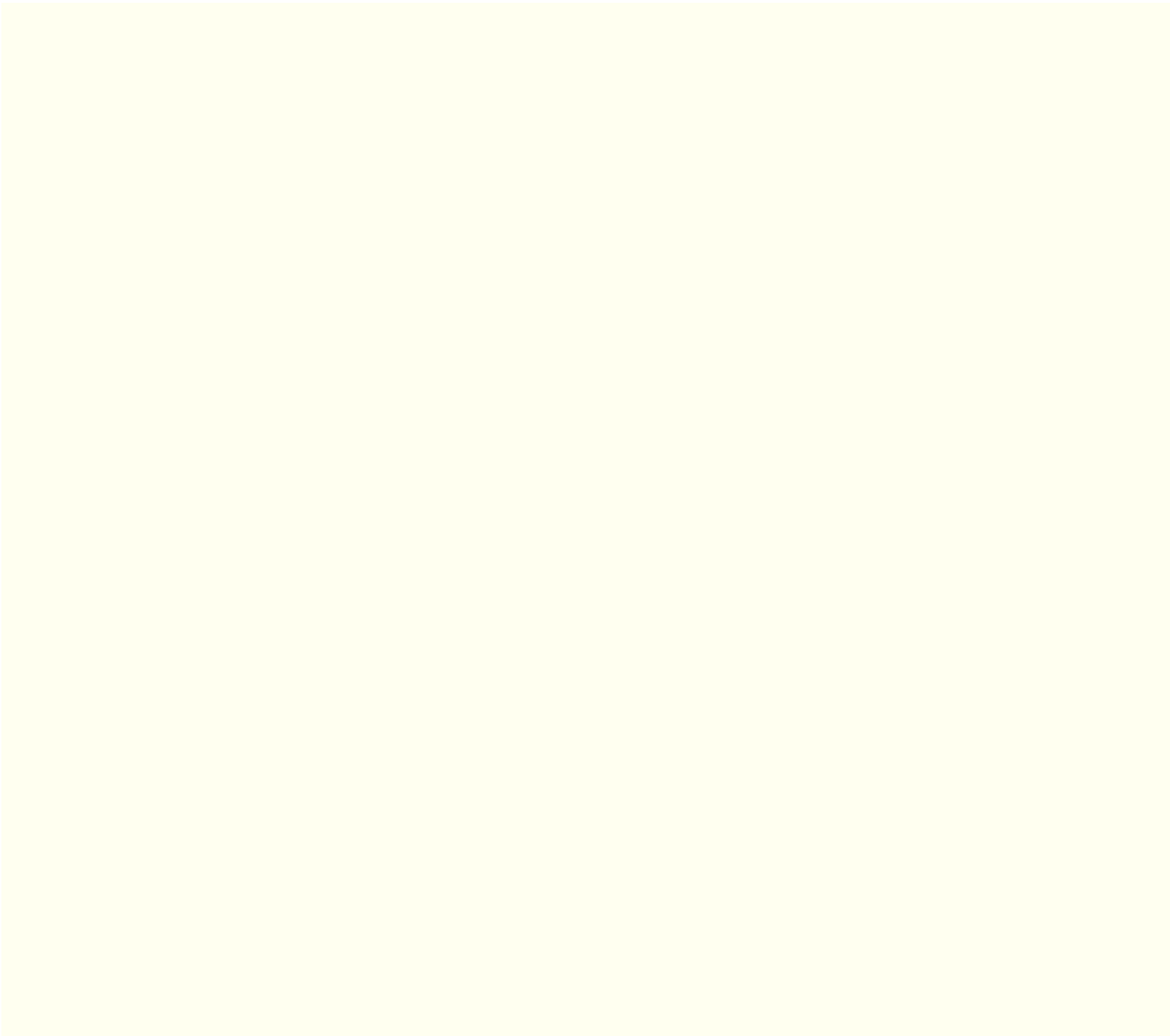


ORGANOGRAMA AFRAFEP



Legenda

- Estrutura de Governança da Afrafep
- Cargos da Afrafep Saúde
- Cargos Transversais
- Cargos da Afrafep Social



—





GERENTE BALNEÁRIO

**DIRETORIA SOCIAL E DE
RELAÇÕES
INSTITUCIONAIS**

DELEGADO REGIONAL

